
HOSPITAL, SCHOOL & UNIVERSITY
Campus Safety
Management Resource for Security Police & Administrators

FIRE SURVEY RESULTS

January/February 2010



Prepared by:

**Bobit Business Media
Research Services**

Background & Methodology



Methodology

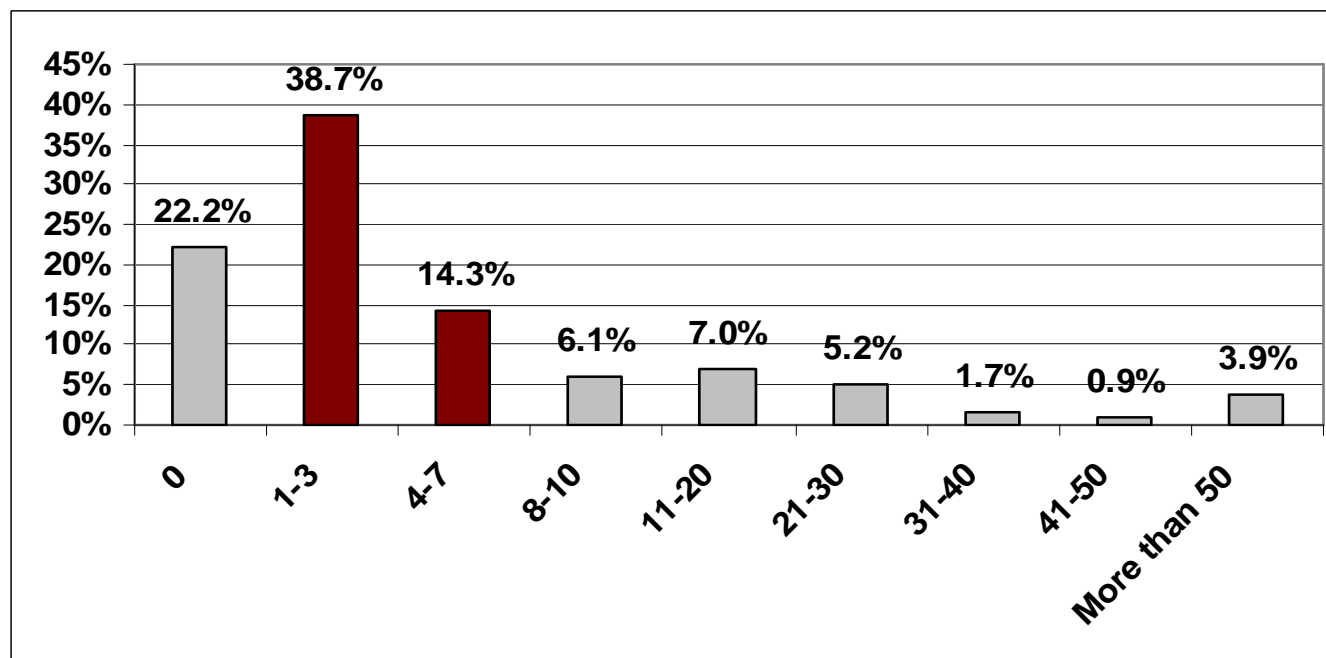
- An online invitation to take the survey was sent to *Campus Safety* subscribers on Nov. 11, 2009
- Invitations to take the survey were also mentioned in the “Campus Clique” eNewsletter
- A reminder was sent on Dec. 9, 2009 to those who did not respond to the initial invitation
- 232 responses were used to compile the results (margin of error: $\pm 6.3\%$ at a 95% confidence level)

Campus Safety magazine wishes to thank those school, university and hospital protection professionals who took our annual fire survey. Your participation is greatly appreciated! For additional information on this and other topics, please visit www.CampusSafetyMagazine.com.

Median: 2

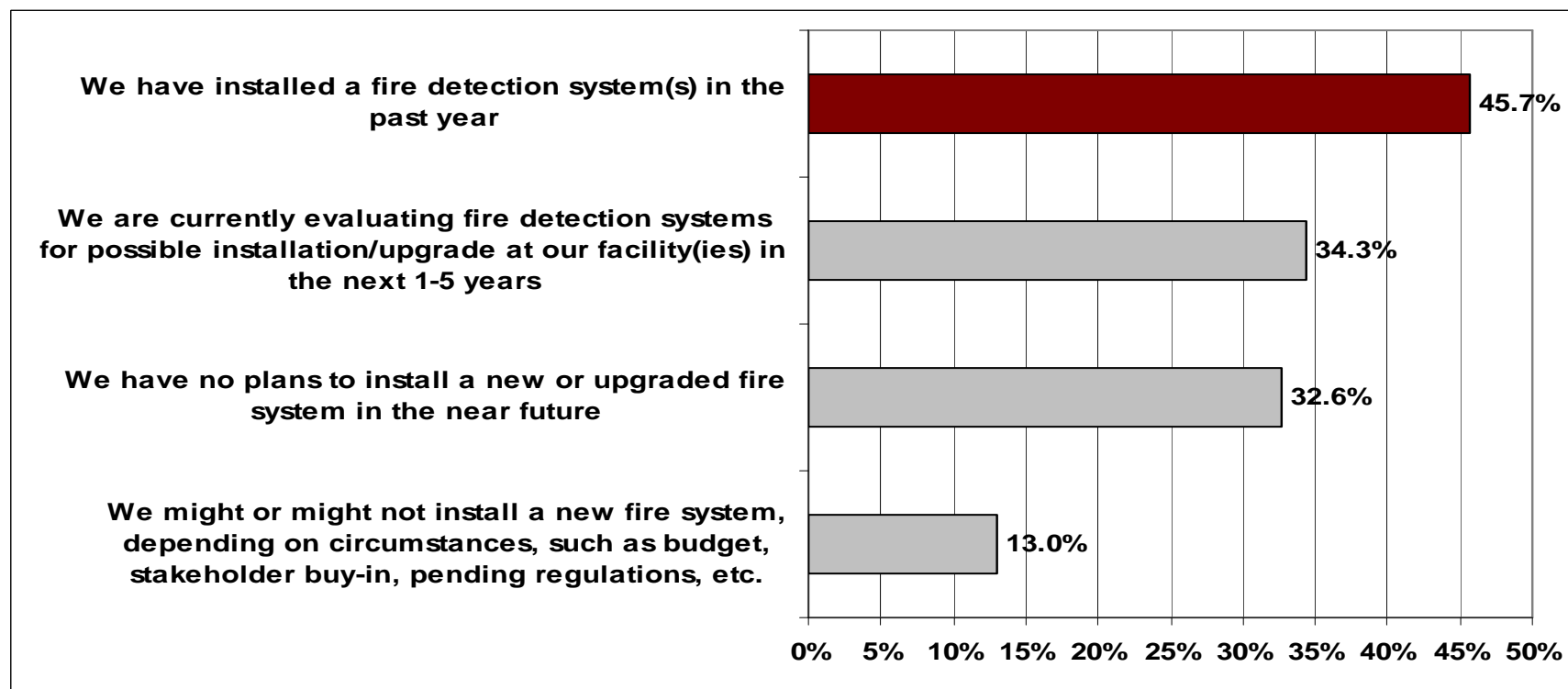
Average: 7 (was 5 in 2008)

How many fire or fire-related incidents has your institution experienced in the past three years?



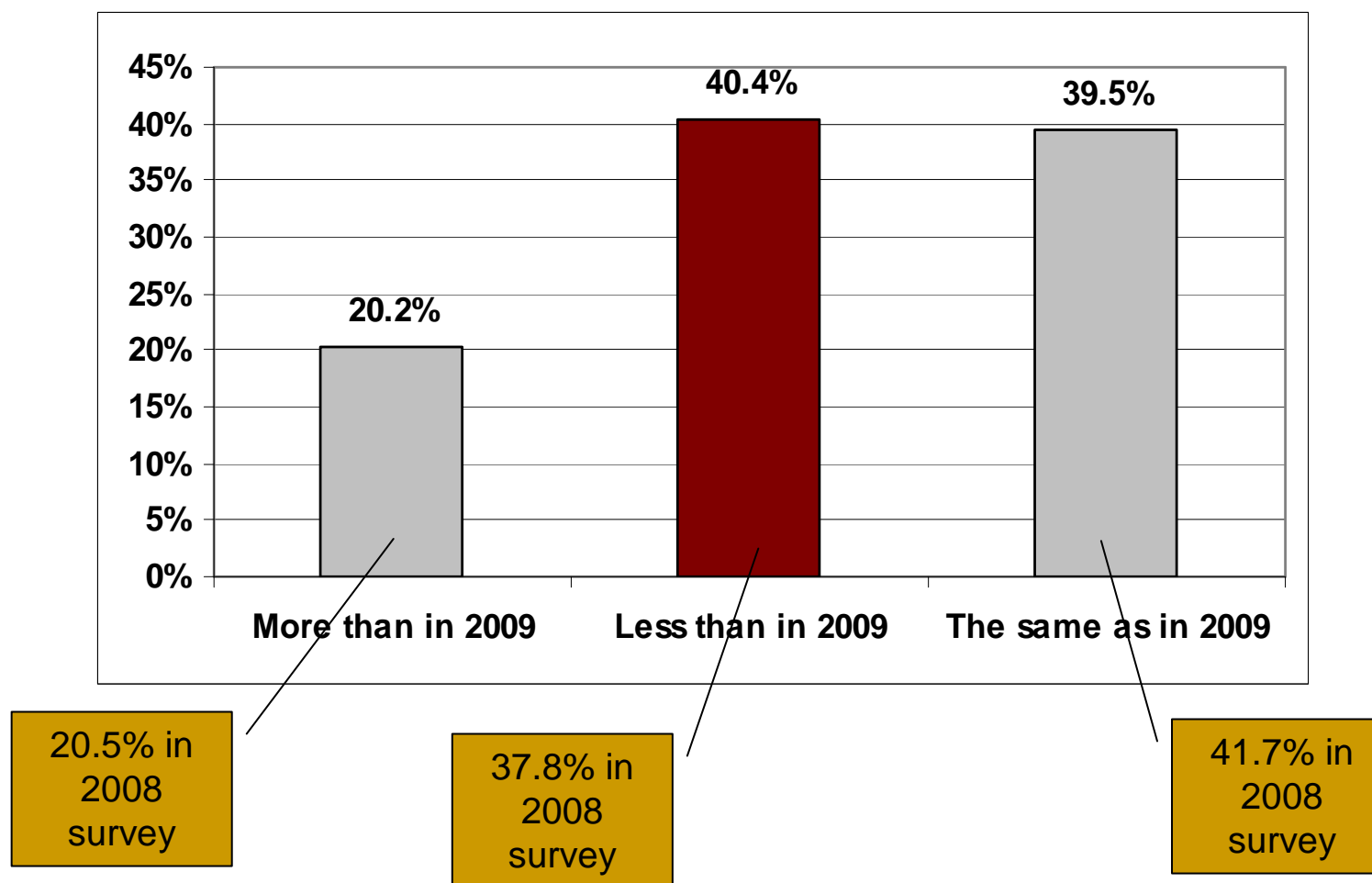
Compared to 2008, the percentage of respondents who said their campuses had more than 20 fires in the past three years increased in 2009 by nearly six points, from 6 percent to 11.7 percent. More than half of that increase (3.6 points) can be attributed to campuses that experienced 21-30 fires.

**Please check all of the following
that apply to your institution:**



The percentage of respondents who have installed fire detection systems in the past year increased more than six points in 2009 to 45.7 percent from 39.3 percent in 2008.

The amount of money your campus has to spend on new or upgraded fire systems in 2010 will be:



What are the biggest challenges facing your institution regarding fire protection? (Check 4 that apply)



Challenge	2009	2008
System maintenance	47.8%	50.1%
False alarms	46.9%	48.3%
Our current system(s) aren't integrated with our other non-fire systems, such as mass notification	35.1%	32.4%
Convincing administration/stakeholders of the need for improved fire systems	26.3%	25.1%
We have many types of fire systems that are not standardized and don't work well with each other	25.4%	19.3%
System design flaws	23.7%	23%
Finding the right integrator to install or upgrade our fire detection system	11.4%	13.1%
System not in compliance with fire code (NFPA)	8.3%	8.7%
Our facilities are old; doing retrofits will damage the décor	8.3%	8.7%
Vandalism/pranks resulting in non-functioning or poorly functioning fire detection system	6.6%	9%
Smoke detection	5.3%	8.5%
Potential for terrorism involving firebombs, incendiary devices, etc.	4.8%	5.3%
We don't understand how to comply with the Campus Fire Safety Right-to-Know Act (colleges only)	4.4%	4.8%
Arson	1.8%	3.7%
Other	11.8%	12%

In 2009, equipment standardization saw the biggest increase in respondents who said it was a problem. More than one in four (25.4%) of survey participants said they have many types of fire systems that are not standardized and don't work well with each other. In 2008, only 19.3 percent of respondents indicated this was a problem.

What are the biggest challenges facing your institution regarding fire protection? "OTHER" Responses

Budget - 3 respondents
None - 3 respondents
ADA Compliance
Age of current system
All of our fire alarm systems are integrated and work extremely well. We have very few problems related to our fire systems. Our biggest challenge related to fire protection is the students understanding Cooking 101!
All systems are updated and functioning great
Brush fires outdoors & Trash can fires from smoking
Chasing bugs with new systems
CO detection
Do not have four on the list.
inmate tampering
Installation of automatic sprinklers

Money
MRI heads
Need to install cameras in hallways to identify parties that are pulling the fire alarm device and triggering a false alarm.
Parts for system no longer easily available.
Providing for remote notification of activation
Retrofitting sprinklers and fire alarm systems in older buildings.
Students can't use microwaves properly
The bad economic times the country is having has slowed us down on making improvements that we were doing at a very time line.
Using contracted security with little or not training in fire protection
We are in the process of installing a complete new addressable fire alarm system cost: approx. 1 million \$
We currently are satisfied with our system

Do you have any other comments regarding fire safety at your campus?

2 outdated systems and if needed would create more damage than newer systems.
All of the incidents noted above (Q#2) were minor and resulted in cosmetic damage (at most). Examples are waste basket fires, industrial kitchen grease fire, etc.
Also have a lack of interest in training from departments that are not required to have training and no support from upper management to enforce training requirements
Consistently see administrators making decisions with no proper training to make the decisions
During 2008/09 we installed new fire detection systems in 6 of 7 buildings in our school district. These systems report to a central office in the District in addition to a monitoring company
false alarms caused by employees not watching the microwaves when heating food.
Fire Safety is very good here staff are well trained and cooperate during drills.
five campuses.... two different systems... both work well!
Getting upper management to understand the risks of not upgrading legacy buildings is a major concern.
I believe our campus does a pretty good job with respect to fire safety. We have over 36,000 students, 300 buildings (85 fully sprinklered resident halls), 11,000 faculty & staff. We have plans in place to systematically replace aging fire alarm systems and to retrofit sprinklers in non-sprinklered buildings. Our malicious false alarm rate is near zero and our fire damages in the few fires that we've had is vary small.
I think finding the budget and administration for necessary but not required changes is difficult for us like at other higher education institutes.
I think that we do an adequate job in fire safety. I would like us to upgrade to a newer system.

Do you have any other comments regarding fire safety at your campus?

Our administration is very supportive of fire safety. We have EST3 systems in most buildings and that is our standard as we build and remodel.
Our existing systems are quite reliable and well maintained but are not state of the art. We are most concerned about student behaviors though our students are pretty typical. Our problems are more from naïveté rather than malice.
Our safety training program includes an award-winning program called, "HRL Fire Academy." This includes specific training for the Resident Advisors who are located in the residence halls.
Our School District's Participation in the Broward County Juvenile Fire Setter Program along with modifications we have made in areas of our school, especially in our group restrooms and the use of security cameras have all helped reduce the number of intentionally set fires. Our District's major cause of fires is the opposite of those findings published by the NFPA. A majority of our fire incidents involve electrical issues, not fires in bathrooms as listed in the NFPA.
Our system was replaced two years ago.
Staff do an excellent job and perform well in drills.
The administration places monetary budgetary items as their focus instead of prevention.
[We are] very proactive in communicating fire and life safety throughout the campus. We have a very good rapport with our students, faculty and staff regarding all fire and life safety issues on campus.
The impact of "LEED" or environmentally designed buildings on a college campus. This type of building usually require extensive smoke control systems. The cost of initial installation and on going maintenance requirements for testing will significantly impact colleges and universities.
The interim and current security directors installed a brand new integrated alarm system.
The number one problem is getting the staff to understand what fire safety is really about.
the one incident we have had in the past three years was an auto fire and not building related.

Do you have any other comments regarding fire safety at your campus?

Two Words; Patience and Persistence. It takes time and repeated request to accomplish some tasks
Very few problems within our buildings. Most fire incidents occur outside of buildings in trash cans and in flower beds with natural mulch beds.
We already have a new upgraded fire system installed over the past 5 years.
We do not have any on-campus housing.
We have been proactive in improving systems and education.
We have done a good job. However, I would like to see an improved integrated standardized system that lends itself to better efficiency and effectiveness.
We have half our buildings set up for mass notification using the fire alarm system. Slowed down due to budget problems.
We have made major improvements with both awareness, education and fire suppression/detection systems
We recently had a webinar looking at en-gauge which is a system that can tie in to your fire system or stand alone. Eliminates labor for 30 day inspections.
Yeah, the feeling here is that nothing will happen. Life Safety is not taken seriously. They do just what has to be done to make it look good on paper. Ask them [when was] the last time they inspected a system.

HOSPITAL, SCHOOL & UNIVERSITY
Campus Safety
Management Resource for Security Police & Administrators

THANK YOU!

For additional information on this and other campus safety and security topics, visit www.CampusSafetyMagazine.com.

To learn how you can limit the number of false/nuisance fire alarms on your campus, read [“7 Steps to Reducing False Fire Alarms”](#) in the January/February issue of CS.